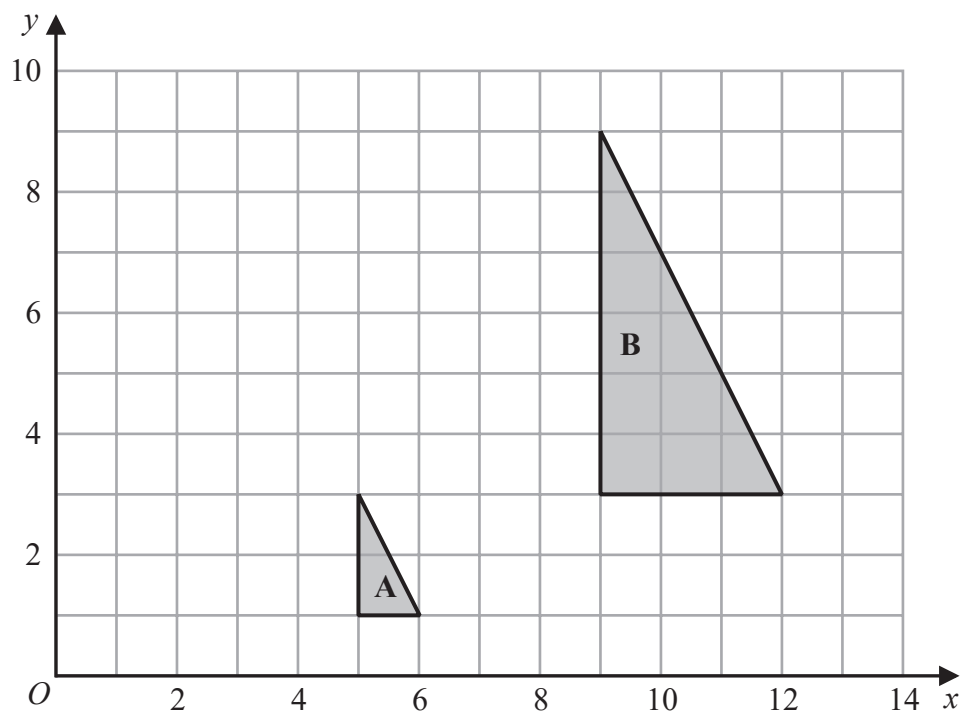


1



- (a) Describe fully the single transformation that maps triangle **A** onto triangle **B**

(3)

- (b) On the grid above, translate triangle **A** by the vector $\begin{pmatrix} -4 \\ 3 \end{pmatrix}$

Label your triangle **C**

(1)

(Total for Question 1 is 4 marks)



- 2 Write 1200 as a product of powers of its prime factors.
Show your working clearly.

DO NOT WRITE IN THIS AREA

DO NOT WRITE IN THIS AREA

DO NOT WRITE IN THIS AREA

(Total for Question 2 is 3 marks)



DO NOT WRITE IN THIS AREA

DO NOT WRITE IN THIS AREA

DO NOT WRITE IN THIS AREA

- 3 Alberto, Bill, Candela and Diana are four friends.

Here is some information about the height of each of these friends.

Alberto's height is 158 cm.

Bill's height is 175 cm.

Candela's height is greater than Diana's height.

The median height of these four friends is 160 cm.

The range of the heights of these four friends is 21 cm.

Work out Candela's height and Diana's height.

Candela cm

Diana cm

(Total for Question 3 is 3 marks)



4 $\mathcal{E} = \{9, 10, 11, 12, 13, 14, 15, 16, 17, 18, 19, 20\}$

$A = \{\text{multiples of } 3\}$

$B = \{\text{odd numbers}\}$

(a) List the members of the set

(i) $A \cap B$

(1)

(ii) $A \cup B$

(1)

(b) Is it true that $24 \in A$?

Tick one of the boxes below.

Yes

No

☐
☐

Give a reason for your answer.

(1)

Set C has 4 members such that $C \cap B' = \{10, 18\}$

(c) List the members of one possible set C

(2)

(Total for Question 4 is 5 marks)



- 5 The diagram shows a shape made from a square $ABCD$ and 4 identical semicircles.

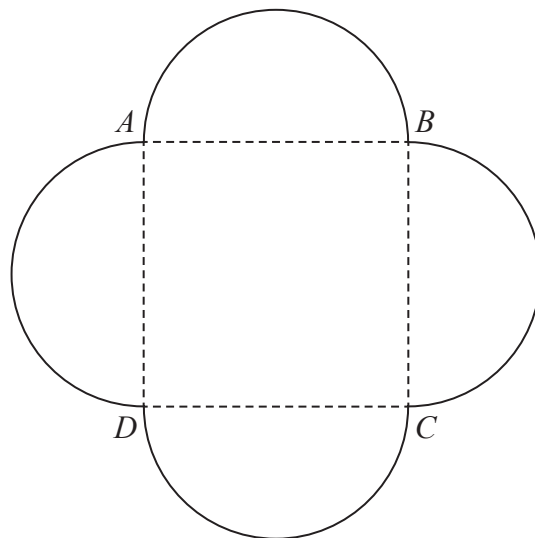


Diagram **NOT**
accurately drawn

As shown in the diagram, the semicircles have AB , BC , CD and DA as diameters.

The area of the square is 36 cm^2

Calculate the total area of the shape.
Give your answer correct to one decimal place.

..... cm^2

(Total for Question 5 is 4 marks)



6 (a) Solve $p = \frac{3p - 5}{10}$

Show clear algebraic working.

$p = \dots\dots\dots$
(3)

(b) Simplify a^0 where $a > 0$

$\dots\dots\dots$
(1)

(c) Simplify fully $\frac{3xy^3}{6x^2y}$

$\dots\dots\dots$
(2)

(d) Factorise fully $10c^3d^2 + 15cd^4$

$\dots\dots\dots$
(2)

(Total for Question 6 is 8 marks)



DO NOT WRITE IN THIS AREA

DO NOT WRITE IN THIS AREA

DO NOT WRITE IN THIS AREA

- 8 A cinema increased the cost of an adult ticket by 12%

After the increase, the cost of an adult ticket was £18.20

Work out the cost of an adult ticket before the increase.

£.....

(Total for Question 8 is 3 marks)



DO NOT WRITE IN THIS AREA

DO NOT WRITE IN THIS AREA

DO NOT WRITE IN THIS AREA

7 $\frac{2^k}{4^n} = 2^x$

Find an expression for x in terms of k and n

$$x = \dots\dots\dots$$

(Total for Question 7 is 2 marks)



- 9 The table gives information about the population, correct to 2 significant figures, of each of five cities in 2018

City	Population (2018)
Ahmedabad	7.7×10^6
Barcelona	5.5×10^6
Chicago	8.8×10^6
Lagos	1.3×10^7
Tokyo	3.7×10^7

- (a) Write 8.8×10^6 as an ordinary number.

.....
(1)

- (b) Which of these cities had the least population in 2018?

.....
(1)

- (c) Work out the difference between the population of Tokyo and the population of Ahmedabad in 2018
Give your answer in standard form correct to 2 significant figures.

.....
(2)

(Total for Question 9 is 4 marks)



- 10 The diagram shows triangle ABP inside the regular hexagon $ABCDEF$

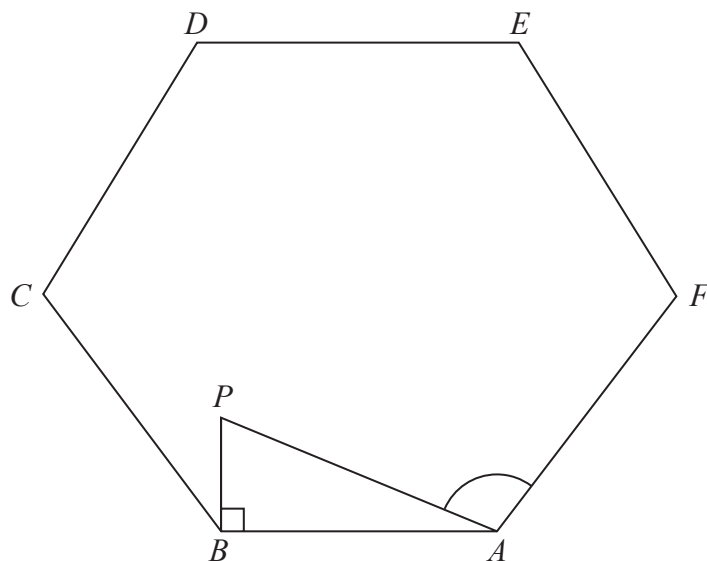


Diagram NOT
accurately drawn

$$AB = 5 \text{ cm}$$

$$BP = 2 \text{ cm}$$

$$\text{Angle } ABP = 90^\circ$$

Work out the size of angle PAF

Give your answer correct to 3 significant figures.

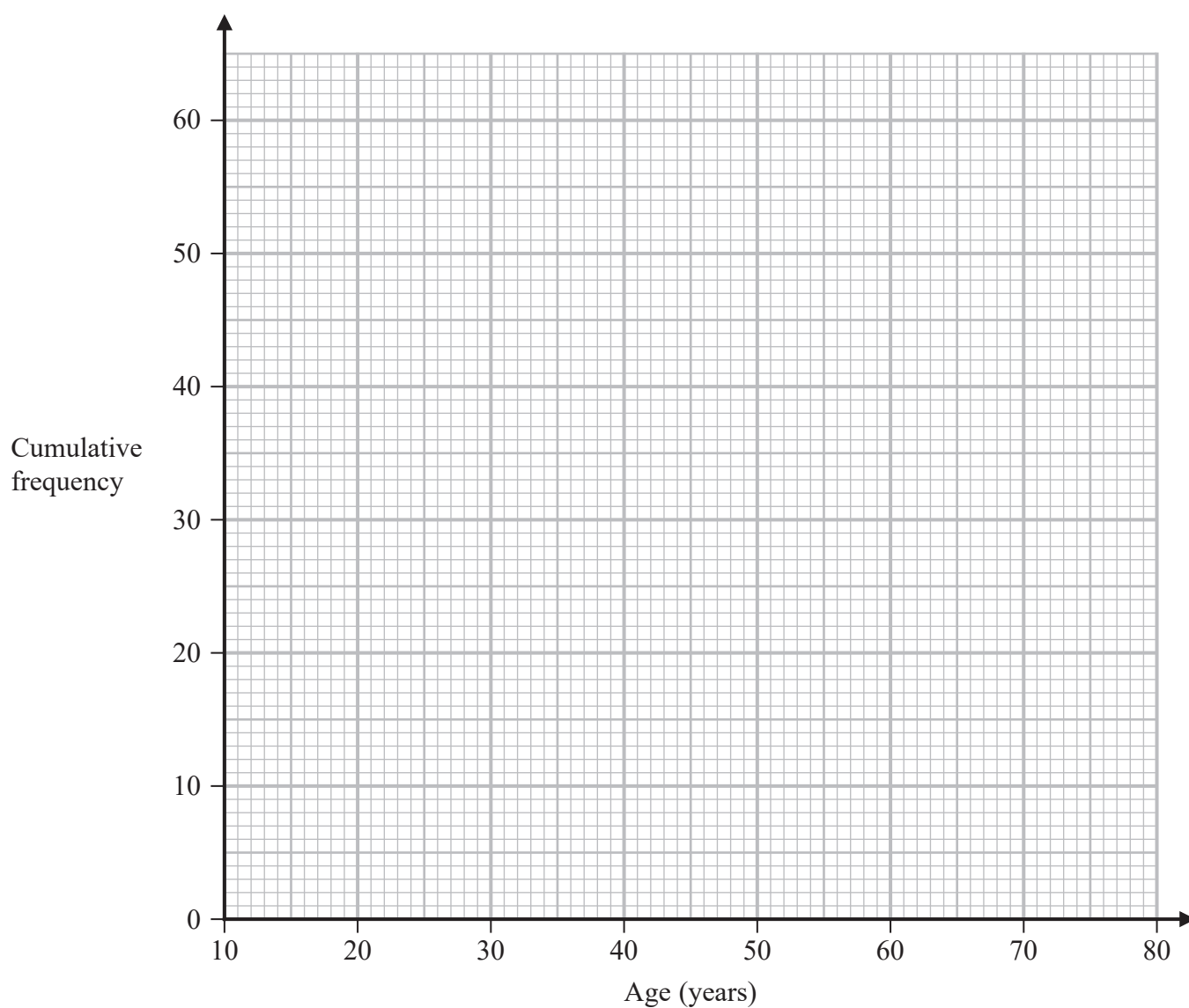
(Total for Question 10 is 5 marks)



- 11 The cumulative frequency table shows information about the ages of 60 people who went to a gym on Saturday.

Age (a years)	Cumulative frequency
$10 < a \leq 20$	13
$10 < a \leq 30$	36
$10 < a \leq 40$	42
$10 < a \leq 50$	47
$10 < a \leq 60$	52
$10 < a \leq 70$	56
$10 < a \leq 80$	60

- (a) On the grid, draw a cumulative frequency graph for the information in the table.



(2)



Question 11 continued

(b) Use your graph to find an estimate for the median of the ages of these people.

..... years
(1)

(c) Use your graph to find an estimate for the interquartile range of the ages of these people.

..... years
(2)

(d) Use your graph to find an estimate for the number of these people who are older than 55 years.

.....
(2)

(Total for Question 11 is 7 marks)



12

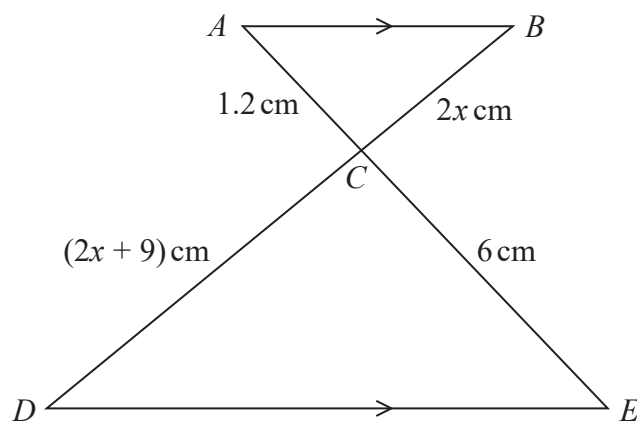


Diagram **NOT**
accurately drawn

ACE and BCD are straight lines.
 AB is parallel to DE

Work out the value of x

$x = \dots\dots\dots$

(Total for Question 12 is 3 marks)



- 13 The diagram shows a sector AOB of a circle with centre O

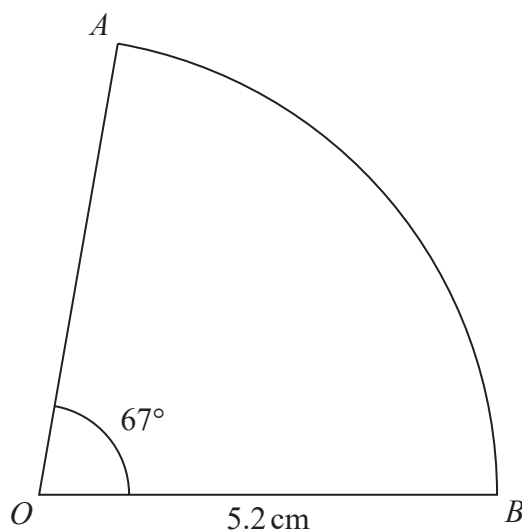


Diagram **NOT**
accurately drawn

Angle $AOB = 67^\circ$
 $OA = OB = 5.2\text{ cm}$

Calculate the perimeter of the sector.
Give your answer correct to 3 significant figures.

..... cm

(Total for Question 13 is 3 marks)



14 Ciara throws **four** fair six-sided dice.

The faces of each dice are labelled with the numbers 1, 2, 3, 4, 5, 6

Work out the probability that at least one of the dice lands on an even number.

DO NOT WRITE IN THIS AREA

DO NOT WRITE IN THIS AREA

DO NOT WRITE IN THIS AREA

(Total for Question 14 is 3 marks)



15 The diagram shows a kite $ABCD$

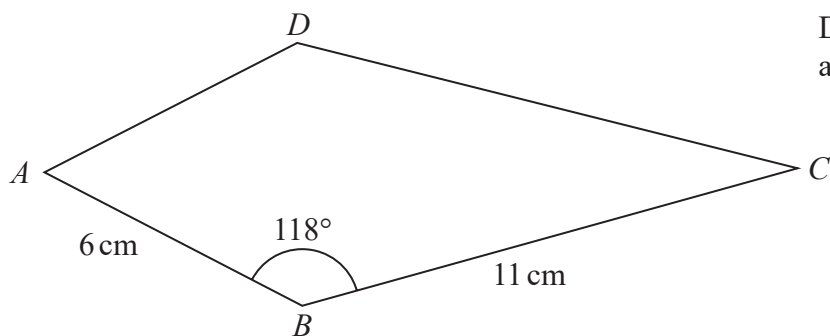


Diagram **NOT**
accurately drawn

$$AB = 6 \text{ cm}$$

$$BC = 11 \text{ cm}$$

$$\text{Angle } ABC = 118^\circ$$

Calculate the area of the kite.

Give your answer correct to 3 significant figures.

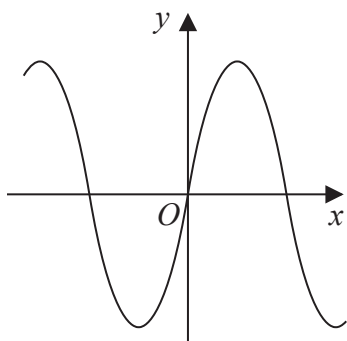
..... cm^2

(Total for Question 15 is 3 marks)

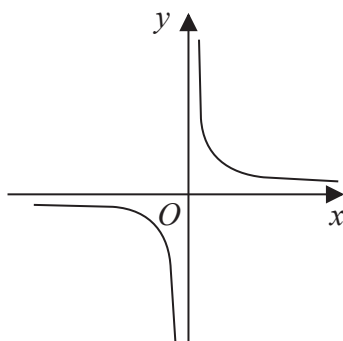


16 Here are nine graphs.

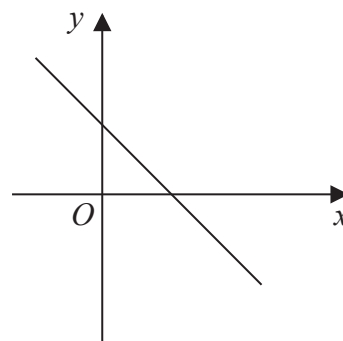
Graph A



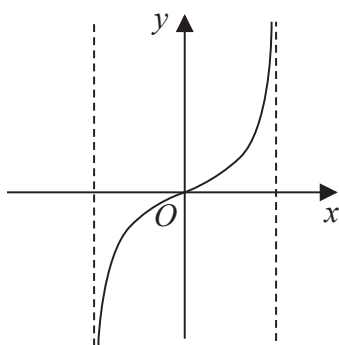
Graph B



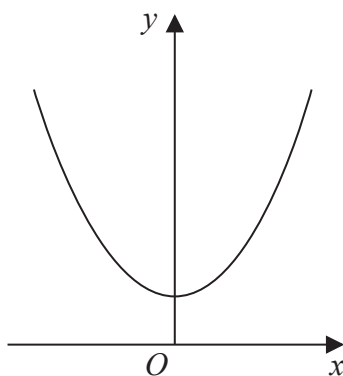
Graph C



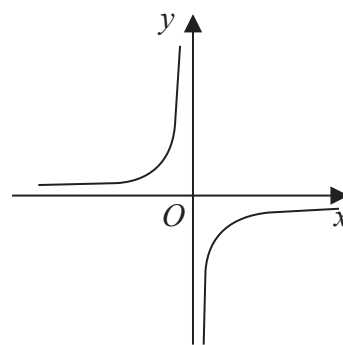
Graph D



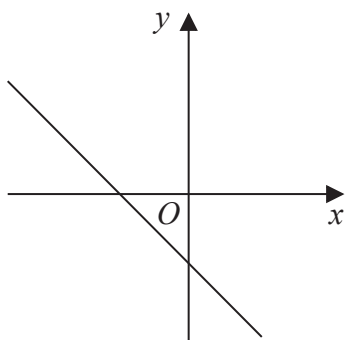
Graph E



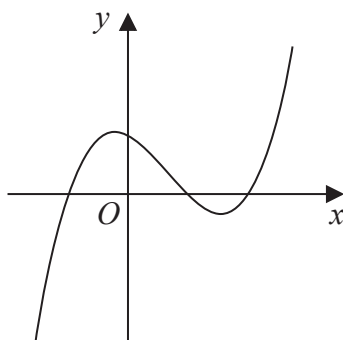
Graph F



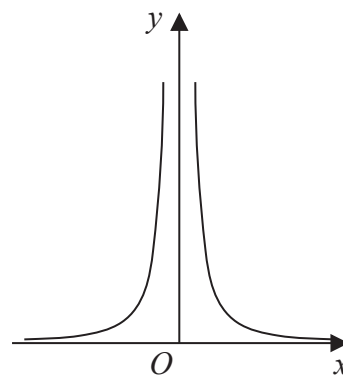
Graph G



Graph H



Graph I



DO NOT WRITE IN THIS AREA

DO NOT WRITE IN THIS AREA

DO NOT WRITE IN THIS AREA



Complete the table below with the letter of the graph that could represent each given equation.
Write each answer on the dotted line.

Equation	Graph
$y = -2x + 3$
$y = -\frac{1}{x}$
$y = \tan x^\circ$
$y = (x + 1)(x - 1)(x - 2)$

(Total for Question 16 is 3 marks)



DO NOT WRITE IN THIS AREA

DO NOT WRITE IN THIS AREA

DO NOT WRITE IN THIS AREA

17 Use algebra to show that $0.3\dot{4}\dot{5} = \frac{\quad}{55}$

(Total for Question 17 is 2 marks)



18 Kaidan and Sonja went on two different car journeys.

For Kaidan's journey

distance = 80 km correct to the nearest 5 km

time = 2.7 hours correct to 1 decimal place

For Sonja's journey

distance = 33 km correct to 2 significant figures

time = 1 hour correct to the nearest 0.1 hour

Kaidan says,

“My average speed could have been greater than Sonja's average speed.”

By considering bounds, show that Kaidan is correct.

Show your working clearly.

(Total for Question 18 is 4 marks)

DO NOT WRITE IN THIS AREA

DO NOT WRITE IN THIS AREA

DO NOT WRITE IN THIS AREA



DO NOT WRITE IN THIS AREA

DO NOT WRITE IN THIS AREA

DO NOT WRITE IN THIS AREA

19 $f(x) = x^2 - 4$

$$g(x) = 2x + 1$$

Solve $fg(x) > 0$

Show clear algebraic working.

(Total for Question 19 is 4 marks)



20 The centre O of a circle has coordinates $(4, 7)$

The point A , on the circle, has coordinates $(6, 11)$ and AOP is a diameter of the circle.

Find an equation of the tangent to the circle at the point P

DO NOT WRITE IN THIS AREA

DO NOT WRITE IN THIS AREA

DO NOT WRITE IN THIS AREA

(Total for Question 20 is 4 marks)



DO NOT WRITE IN THIS AREA

DO NOT WRITE IN THIS AREA

DO NOT WRITE IN THIS AREA

21 Solve the simultaneous equations

$$\begin{aligned}x - 2y &= 3 \\ x^2 - y^2 + 2x &= 10\end{aligned}$$

Show clear algebraic working.

(Total for Question 21 is 5 marks)



P 6 8 7 9 1 A 0 2 3 2 8

22 The point A with coordinates $(-3, 2)$ lies on the straight line with equation $y = f(x)$

(a) Find the coordinates of the image of the point A on the straight line with equation

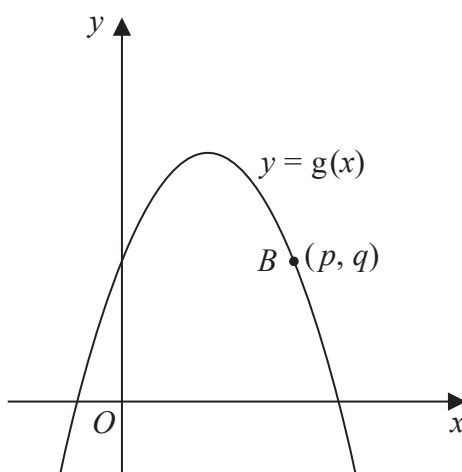
(i) $y = f(x) - 3$

(.....,)
(1)

(ii) $y = f\left(\frac{x}{2}\right)$

(.....,)
(1)

Here is a sketch of part of the curve with equation $y = g(x)$



The point B with coordinates (p, q) lies on the curve.

(b) Find the coordinates of the image of the point B on the curve with equation

$$y = -g(x - c)$$

where c is a constant.

(.....,)
(2)

(Total for Question 22 is 4 marks)



DO NOT WRITE IN THIS AREA

DO NOT WRITE IN THIS AREA

DO NOT WRITE IN THIS AREA

23 Express $\left(\frac{20}{x^2 - 36} - \frac{2}{x - 6}\right) \times \frac{1}{4 - x}$ as a single fraction in its simplest form.

(Total for Question 23 is 3 marks)



24 The diagram shows a frustum of a cone, and a sphere.

The frustum, shown shaded in the diagram, is made by removing the small cone from the large cone.

The small cone and the large cone are similar.

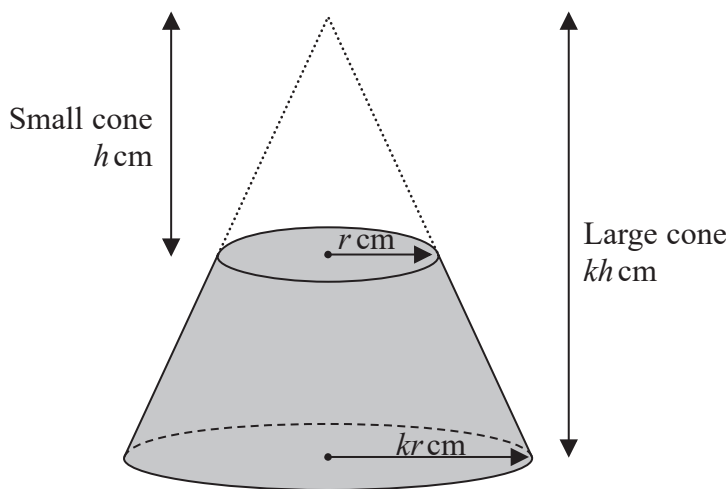


Diagram **NOT** accurately drawn

The height of the small cone is h cm and the radius of the base of the small cone is r cm.
The height of the large cone is kh cm and the radius of the base of the large cone is kr cm.
The radius of the sphere is r cm.

The sphere is divided into two hemispheres, each of radius r cm.

Solid **A** is formed by joining one of the hemispheres to the frustum.

The plane face of the hemisphere coincides with the upper plane face of the frustum, as shown in the diagram below.

Solid **B** is formed by joining the other hemisphere to the small cone that was removed from the large cone.

The plane face of the hemisphere coincides with the plane face of the base of the small cone, as shown in the diagram below.

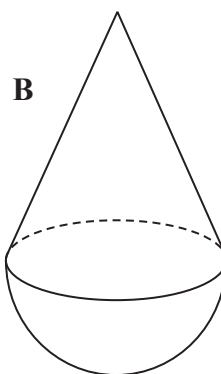
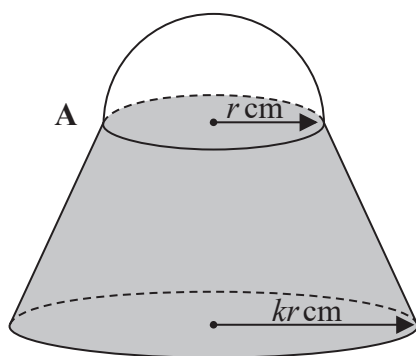


Diagram **NOT** accurately drawn



DO NOT WRITE IN THIS AREA

DO NOT WRITE IN THIS AREA

DO NOT WRITE IN THIS AREA

The volume of solid **A** is 6 times the volume of solid **B**.

Given that $k > \sqrt[3]{7}$

find an expression for h in terms of k and r

$h = \dots\dots\dots$

(Total for Question 24 is 6 marks)



25 $ABCD$ is a parallelogram and ADM is a straight line.

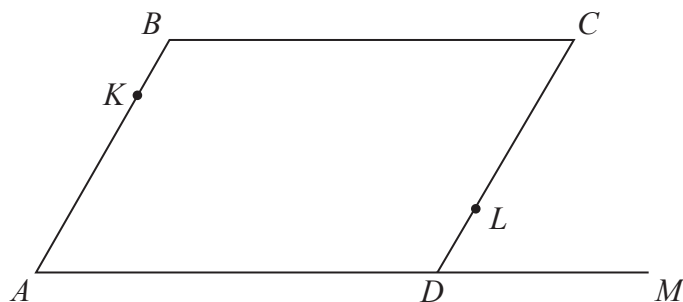


Diagram **NOT**
accurately drawn

$$\vec{AB} = \mathbf{a} \quad \vec{BC} = \mathbf{b} \quad \vec{DM} = \frac{1}{2} \mathbf{b}$$

K is the point on AB such that $AK:AB = \lambda:1$

L is the point on CD such that $CL:CD = \mu:1$

KLM is a straight line.

Given that $\lambda:\mu = 1:2$

use a vector method to find the value of λ and the value of μ

$$\lambda = \dots\dots\dots$$

$$\mu = \dots\dots\dots$$

(Total for Question 25 is 5 marks)

